

2022/23

ottobock.

Base Price - £4999.00

Order no.:

Valid from 01.04.22 to 31.03.23
Please ensure you are using the latest order form☐ Provide estimate only☐ Order☐ Attachment for custom fabrication enclosed

Billing address/customer number

Delivery address

Sales person

Name

Date Signature

By placing the order, you agree to comply with the instructions for use/service manuals for accessories and products of other manufacturers when combining them with an Ottobock product, in addition to the instructions for use/service manuals of the respective Ottobock products. Also you confirm to have read, understood and accepted, our general terms and conditions. In addition, you agree, upon placing an order, to conduct your own conformity assessment or approval in accordance with national requirements if and when you implement modifications or attachments that do not meet the specifications of Ottobock instructions for use/service manuals.

Skippi

Power wheelchair for children

Max. load capacity: 50 kg/110 lbs
Article number: 490E55=00000_K

Figure shows standard equipment with options

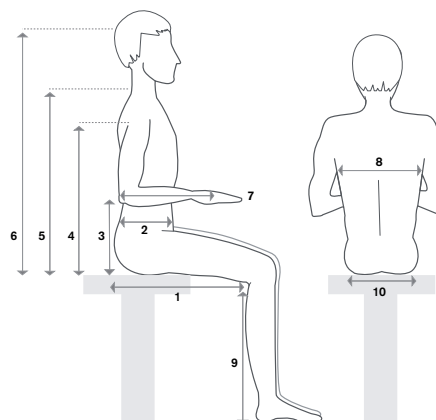
Standard equipment

- VR2 joystick modul
- 6 km/h
- 28 Ah (C5) AGM batteries
- Battery charger
- 8" PU caster wheels
- Standard seat with back bag
- Seat cushion
- Telescoping side panels
- Individual telescoping leg supports
- Wheel cover for drive wheels
- Drive wheels with aluminium rim, black
- Lap belt with buckle

Basic data (voluntary information)

Gender _____ Indication _____

Age _____ Paying party _____



* This information will help to support user-oriented settings and product development. Ottobock guarantees the confidential and purely internal use of these data.

Mandatory information*

User height in cm _____

User weight in kg _____

1 Seat depth _____

2 Trunk depth _____

3 Arm support height _____

4 Armpit height _____

5 Shoulder height _____

6 Head height _____

7 Forearm length to the middle of the palm _____

8 Trunk width _____

9 Lower leg length _____

10 Seat width _____

The number codes contained in this order form are not intended to be used as article numbers for spare parts orders.
Please use the spare parts catalogue for spare parts orders.

Otto Bock Mobility Solutions Plc - 32 Parsonage Road, Englefield Green, Egham, Surrey, TW20 0LD - Tel 01784 744900 - Email bockuk@ottobock.com - Web www.ottobock.com/en-uk

Setting for standard seat	(SD 28 ... 38 cm, SW 30 ... 38 cm)					
Back support angle	<input type="checkbox"/> mechanical -9/1/11/21°		<input type="checkbox"/> mechanical 0/10/20/30°			
Not available with electric back support angle adjustment!						
Seat depth SD in cm	<input type="checkbox"/> 28	<input type="checkbox"/> 30	<input type="checkbox"/> 32	<input type="checkbox"/> 34	<input type="checkbox"/> 36	<input type="checkbox"/> 38
Seat width SW cm (30 ... 38 cm, SW 24 ... 29 cm possible with removable lateral pads)					
Lower leg length cm (15 ... 38 cm) without seat cushion					

Push handles		
ED10	<input type="checkbox"/> Height-adjustable, detachable	£207.00

Seat tilt		
EC 51	<input type="checkbox"/> Mechanical, continuous, range 20° see exclusions 8.1)	£215.00
EC 50	<input type="checkbox"/> Electrical, continuous, range 20°	£512.00

Seat height adjustment		
EC57	<input type="checkbox"/> Electrical, continuous, range 20 cm / 7.9" see exclusions 9.1) and 9.2)	£1595.00

Back support angle adjustment		
ED 50	<input type="checkbox"/> Electrical, continuous, range 25° see exclusions 10.1) and 10.2)	£642.00

Seating system accessories		
EE 30	<input type="checkbox"/> Mounting accessories for head support see exclusions 11.1)	£39.00
EP 65	<input type="checkbox"/> Lap belt with buckle	Inclusive
EE 37	<input type="checkbox"/> Lateral pads, detachable, for side panel (pair, thickness 1.2"/3 cm, see exclusions 11.1)	£88.00
ED 11	<input type="checkbox"/> Back support extension (35 cm / 13.8" - 46 cm / 18.1") see exclusions 11.1)	£174.00
Information on head supports, lap belts and other accessories can be found in the accessory catalogue		

Leg supports		
EB 02	<input type="checkbox"/> Individual with aluminium foot plates (standard equipment, LL 23 - 38 cm) see exclusions 12.1) und 12.4)	Inclusive
EB 05	<input type="checkbox"/> Single-panel with aluminium foot plate (LL 23 - 38 cm) see exclusions 12.1) und 12.4)	£161.00
EB 06	<input type="checkbox"/> Individual for short LLL with aluminium foot plates (LL 15 ... 22 cm) see exclusions 12.1) und 12.4)	£230.00
EB 16	<input type="checkbox"/> Single-panel with aluminium foot plate for short LLL (LL 15...22 cm) see exclusions 12.1) und 12.4)	£325.00
EB 20	<input type="checkbox"/> Mechanically elevating (LL 15 ... 33 cm) see exclusions 12.1) und 12.4)	£575.00
EB 07	<input type="checkbox"/> Without leg supports see exclusions 12.5)	Inclusive
Information on foot positioning can be found in the accessory catalogue		

Frame colour		
013	<input type="checkbox"/> Jet black RAL 9005 matte	Inclusive
016	<input type="checkbox"/> Silver metallic	Inclusive
021	<input type="checkbox"/> Sparkle granny-smith	Inclusive
023	<input type="checkbox"/> White RAL 9016	Inclusive
037	<input type="checkbox"/> Pink RAL 4010	Inclusive

Tyres		
EF 10	<input type="checkbox"/> Puncture-proof 8" PU caster wheels, drive wheels 12 1/2 " pneumatic, black aluminium rims (standard equipment)	Inclusive
EG 06	<input type="checkbox"/> Puncture-proof tyres for all wheels	£124.00

Battery charger			
EU 91	<input type="checkbox"/>	Battery charger (standard equipment)	Inclusive
EU 02	<input type="checkbox"/>	Battery charger without fan (low-noise) see exclusions 28.1) and 28.2)	£67.00
Control panel			
EU 85	<input type="checkbox"/>	Control panel Standard (standard equipment)	Inclusive
EU 06	<input type="checkbox"/>	Mid-tray control (MTC), right (manuel flip over)	£1010.00
EU 06	<input type="checkbox"/>	Mid-tray control (MTC), left (manuel flip over)	£1010.00
Control panel holder			
EU 19	<input type="checkbox"/>	Standard	Inclusive
EU 20	<input type="checkbox"/>	Swing-away in parallel	£197.00
Control panel holder mounting side see exclusions Ausschlüsse 16.1) and 16.2)			
	<input type="checkbox"/>	Right	
	<input type="checkbox"/>	Left	
Control device accessories			
EU 15	<input type="checkbox"/>	Attendant control (height-adjustable, removable push handles required) see exclusions 8.1)	£559.00
EU 23	<input type="checkbox"/>	Fork for tetraplegics (hand width 4-8 cm/ 1.6"-3.1") see exclusions 16.1) and 19.1)	£133.00
EU 24	<input type="checkbox"/>	Stick S80 (Joystick handle 80 mm/ 3.1") see exclusions 16.1) and 19.1)	£67.00
EU 25	<input type="checkbox"/>	Soft ball, black covered see exclusions 16.1) and 19.1)	£120.00
EU 26	<input type="checkbox"/>	Ball top, small (diameter 43 mm/1.7") see exclusions 16.1) and 19.1)	£91.00
EU 35	<input type="checkbox"/>	Soft ball, coloured (diamter 30 mm/1,2", 4 pieces) see exclusions 19.1)	£50.00
General accessories			
ES 39	<input type="checkbox"/>	Manual horn (Kangaroo)	£24.00
ES 35	<input type="checkbox"/>	Therapy tray, swing-away (including mounting accessory, cut-out for control panel has to be custom-made) see exclusions 16.1)	£444.00
ES 40	<input type="checkbox"/>	Pennant	£75.00
ES 63	<input type="checkbox"/>	Bumper bar, detachable, silver matallic see exclusions 20.1)	£225.00
EZ 52	<input type="checkbox"/>	Tool kit with air pump	£45.00
ES 60	<input type="checkbox"/>	Vehicle transport kit according to ISO 7176-19 see exclusions 20.2)	Inclusive
Lighting see exclusions 45.0)			
ES 08	<input type="checkbox"/>	Lighting for footpaths see exclusions 45.1)	Inclusive
Speed			
ET 01	<input type="checkbox"/>	6 km/h	Inclusive
ET 09	<input type="checkbox"/>	7 km/h see exclusions 28.1)	Inclusive

Information



ED 10 Push handles, Height-adjustable, detachable



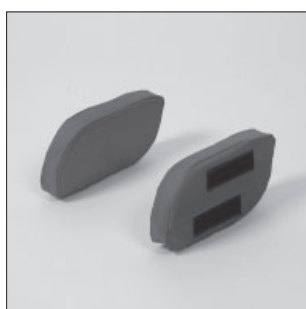
EC 50 Electric seat tilt



EC 57 Electric seat height adjustment



ED 50 Electric bank angle adjustment



EE 37 Lateral pads



EB 02 Leg support, individual



EB 05 Leg support, single-panel



EB 20 Leg support, elevating



EU 85 Control panel, Standard



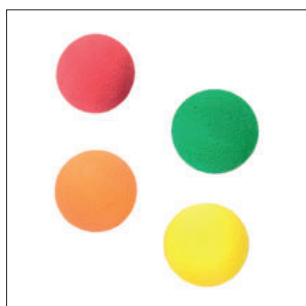
EU 06 Mid-tray control



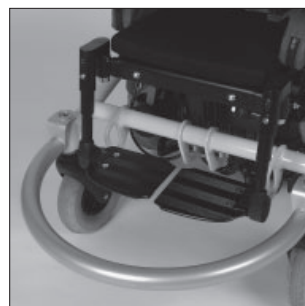
EU 20 Control panel holder, swing-away in parallel



EU 15 Attendant control



EU 35 Soft ball, coloured



ES 63 Bumper bar



EU 08 Lighting for footpaths



ES 06 Four way lighting, at the back

Notes and exclusions

- 8.1) Possible only in combination with height-adjustable, detachable push handles
- 9.1) Cannot be combined with seat depth 28 cm / 11"
- 9.2) Cannot be combined with mechanical seat tilt
- 10.1) Cannot be combined with back angle -9/1/11/21° or 0/10/20/30°
- 10.2) Mandatory information in combination with unselected back angle
- 11.1) Possible only in combination with lap belt
- 12.1) Possible only in combination with lower leg length 23 cm / 9.1" to 38 cm / 15"
- 12.2) Possible only in combination with lower leg length 15 cm / 5.9" to 22 cm / 8.7"
- 12.3) Possible only in combination with lower leg length 15 cm / 5.9" to 33 cm / 13"
- 12.4) Possible only in conjunction with selected lower leg length
- 12.5) Not possible in conjunction with selected lower leg length
- 16.1) Cannot be combined with mid-tray control (MTC), right or left
- 16.2) Mandatory information in combination with control panel, standard
- 19.1) Only one joystick top is possible
- 20.1) Possible only in combination with lower leg length <= 32 cm
- 20.2) Cannot be combined with electric back angle adjustment
- 28.1) Not possible in conjunction with Germany or Austria as the country of destination
- 28.2) Not possible in conjunction with Argentina, Brazil, Canada, Columbia, Mexico or United States of America as the country of destination
- 45.1) Mandatory information in conjunction with all countries of destination except Other countries, Argentina, Australia, Brazil, France, Hong Kong, Japan, Canada, Columbia, Korea, Mexico, Russia, Switzerland, Thailand, United Kingdom or United States of America
- 45.2) Not possible in conjunction with Germany as the country of destination