

# Rascal Smilie Auto Scooter

Owner's Manual & Service Record



Rascal Smilie Auto Scooter



Electric Mobility Euro Limited, Canal Way, Ilminster, Somerset TA19 9DL  
Telephone: 01460 258100 [www.electricmobility.co.uk](http://www.electricmobility.co.uk)



E. and O.E. Issue 1 08/2019



*Rascal Smilie Auto*



*Umbilical Power Cable*



*Removable Lithium-ion Battery Pack*

Electric Mobility Euro Ltd. offers this robust, manoeuvrable Scooter for convenient indoor and outdoor use. The Smilie Auto Scooter can easily be folded or un-folded at the 'press-of-a-button' for flexible storage and/or for transportation, including cars, MPVs, vans and passenger aircraft\*.

Provided that your Scooter is maintained and operated in accordance with this manual it should last for many years and provide you with freedom and independence.

Please read this manual thoroughly before using your Scooter. If you have any doubts about warnings or instructions, ask your dealer for an explanation. If at any time you feel that you may not be able to control your Scooter safely, do not drive it, and consult your dealer for a solution. If you think the Scooter may be damaged, do not drive it and contact your dealer for advice.

Note:\* Subject to airline regulations and restrictions, and battery type used – see **Air Travel** section later in this manual.

We suggest that you keep this owner's manual in a safe place as it contains essential safety, operation and maintenance information for this Scooter.

### Notice

All Electric Mobility Vehicles are sold through authorised dealers. Make sure your dealer demonstrates all the features of the product prior to, or when, it is delivered.



### Warning!

This manual contains important safety notices. Please take time to read and understand them. Ignoring them may endanger you or others.



---

# Contents

Dealer Information	4
Features & Layout	4
Safety Information	5
Intended Use of Vehicle	5
Controls	8
Freewheel Device	9
Brakes	9
Armrest Adjustment	10
Seat Back	10
Tiller Adjustment & Lock	11
Transferring In & Out of the Scooter	11
Operation	12
Driving the Vehicle	12
Driving the Vehicle - Hazards	13
Transporting the Scooter	14
Folding & Un-Folding the Scooter	15
Manoeuvring the Scooter	18
Scooter Storage	19
Air Travel	19
Battery Charging	19
Battery Charging Information	20
Battery Pack	21
Battery Pack - Umbilical	21
Service & Maintenance	22
User Maintenance	22
Scooter Diagnostic Functions	23
Troubleshooting Guide	24
Additional Safety Information	25
Disposal	25
Support Information	25
Frequently Asked Questions (FAQ)	25
Engineer's Checklist.	26
Technical Information Regarding EMI	27
Technical Specifications – Rascal Smilie Auto	28
Service Log	29

## Dealer information

**This is your contact number for service and support**

Dealer Stamp

Telephone:

Email:

Product Model Number

Serial Number

Date of Purchase

Owner

For product information see serial number plate on the seat post under the seat.

**ELECTRIC  
MOBILITY**

**Manufacturer:** Electric Mobility Euro Limited  
Canal Way, Ilminster, Somerset TA19 9DL  
Company Registration in England No. 2419231

## Features & Layout

Photograph below shows the Rascal Smilie Auto Scooter in 'Drive' position.

*See the Technical Specification for full details*

1. Delta-bar tiller
2. Finger control lever
3. Removable Lithium-ion Battery Pack
4. Tiller Adjustment
5. Front LED position light
6. Puncture-proof solid tyres
7. Tiller Charging Point
8. Freewheel Lever
9. Battery Charge Point

10. Front Handle
11. Support Wheels
12. Fold-down backrest
13. Adjustable Armrests
14. Safety cut-out device
15. Rear LED Position / Brake light
16. Folding Switch Panel



## Safety Information

**Read this manual thoroughly before driving or operating the vehicle.**

If you have any doubt about the content of this manual please contact your dealer to resolve the problem. Please read this manual, and ensure your Scooter is serviced regularly.



Within this manual there are important safety notices. They are clearly marked with the sign (left) Make sure that you understand all these notices. If you have any doubt, contact your dealer.



**Book symbol:** This symbol appears on the product. Please read this product manual before assembling or operating the Scooter.



**Pinch-point symbol:** Wherever you see this sign there is a nearby risk of injury owing to a pinch or crushing point.



**Tip symbol:** This sign indicates advice on how to get the most from your Scooter.

© 2019 Electric Mobility Euro Ltd.

No liability is assumed with respect to the use of any information contained in this publication. While every precaution has been taken in the preparation of this publication Electric Mobility Euro Ltd. assumes no responsibility for errors or omissions nor is any liability assumed for damages resulting from the use of information contained in this publication. This publication, as well as the operational details described herein, is subject to change without notice.

## Intended Use of the Vehicle

The Rascal Smilie Auto Scooter is designed for use by adults with a disability (up to the maximum recommended weight (see Technical Specification section) who require a robust daily use Scooter that is ideal for both indoor and outdoor use with the capability to be automatically folded and unfolded for storage or transportation.

The Scooter is intended for use for both outdoors and indoors on hard /smooth surfaces. Kerbs should be avoided, but the Scooters can mount kerbs and small obstacles up to that specified in the Technical Specification sheet.

Users could endanger themselves and others if they are not capable of driving their Scooter safely. The Scooter should not be used on potholed, rutted or slippery surfaces such as grass.

Dealers will advise on the most suitable vehicle from the Electric Mobility range, but it is up to users to ensure that they have the manual dexterity to drive the vehicle, adequate sight and hearing to perceive danger in time, and can at all times operate the Scooter safely in the expected conditions. If in doubt we suggest you consult a healthcare professional and your nearest dealer for advice on the most suitable Scooter for your particular condition. Users should also regularly assess their ability to operate their vehicle safely.





## General Warnings

**Warning:** The operation of Scooters can endanger the life of the driver or third parties. Any driver should always be fully capable of operating this vehicle safely.

**Warning:** Sitting for long periods may increase the chance of thromboses or pressure sores. Users prone to such conditions are advised to take medical advice.

**Warning:** The Rascal Smilie Auto Scooter has been designed and tested for drivers with weights up to those in the Technical Specification Sheets. These weights should never be exceeded.

**Warning:** Do not exceed the specification; do not modify this Scooter or use it other than as intended.

**Warning:** Passengers, including children, and animals should never be carried.

**Warning:** Electromagnetic interference may affect the driving of this Scooter:

- Do not operate devices such as CB radios or mobile phones while the vehicle is switched on.
- Avoid getting close to transmitter masts, such as television and radio stations.

If your vehicle ever starts to operate by itself switch it off and report this to your Dealer.

**Warning:** The operation of any Scooter may affect sensitive electronic circuits such as alarm systems or Automatic doors in shops.

**Warning:** Do not drive, fold or un-fold the Scooter if any of the mechanisms and/or controls are defective. Report any defects or faults to your dealer.

**Warning:** Before sitting-on or driving the Scooter, always check that the folding lock mechanism is engaged and the scooter is in the 'drive' position.  
**NEVER SIT OR ATTEMPT TO USE THE SCOOTER WHILST FOLDING OR UN-FOLDING, OR WHEN PARTIALLY FOLDED.**

## Driving

**Before driving, refer to 'Driving the Vehicle' In this manual**

**Warning: Ambient Operating Temperature Range.** Do not use your Scooter in temperatures outside the range stated in the Technical Specifications section of this manual. Driving in very hot or very cold conditions can make driving more hazardous.

**Warning: Freewheel Device/Mode.** Before getting on your Scooter always check that the freewheel lever is in the Drive position. When the freewheel lever is in the freewheel position, the main brakes on your Scooter will not function. Extra care should be taken with your Scooter when it is in freewheel mode as it could move without warning. You must never sit on or try to ride your Scooter when it is in freewheel mode as serious injury or death may result. **NEVER SIT ON THE SCOOTER WHEN IN FREEWHEEL MODE.**

**Warning: Transferring On and Off.** Do not attempt to get on or off your Scooter unless it is switched off, at rest, and on a stable, level surface. Never get on or off on a hill or incline.

**Warning: Damage.** Before driving off, check the Scooter for damage, particularly that which could affect the controls, wheels, freewheel function and/ or drive motor.

**Warning: Footrest.** Before switching on the Scooter, always make sure that your feet are safely on the footrest areas. If you drive forward with your feet still on the ground, they could become trapped under the Scooter and serious injury may result.

**Warning: Armrests.** Do not use the armrests as a support when getting in or out of the Scooter. Make sure the armrests are lowered and secure before you start off otherwise you may fall out. Never drive without armrests fitted.

**Warning: Seat.** Never drive Scooter without the seat-base fully engaged in the fully forward locked 'green' position. Always check seat-base is engaged prior to use. Always drive the Scooter with the seat-back in upright position.

**Warning: Entanglement.** Do not wear clothing or carry items on the Scooter that could become entangled in wheels or other moving parts whilst operating the Scooter. Severe injury may result.

**Warning: Battery Charge Level.** Before driving off, always check the battery indicator. If you are in any doubt, ensure all the batteries are fully charged before starting on a journey.

**Warning: Castoring.** Be aware that, if you set off when the front wheels are not straight, the initial movement could be partially sideways.

**Warning: Power.** Unless there is an emergency, do not switch the power off when moving. The Scooter may stop very suddenly. Release the forward / reverse control and the Scooter will come to a controlled stop.

**Warning: Slopes.** On steep slopes the Scooter could topple over. Always try to avoid crossing a slope. If you have to cross a slope, take great care to avoid tipping. Never make sharp turns on slopes. Never drive on slippery or icy slopes. - If you are not comfortable with the hill gradient, consider an alternative route. See "Driving Your Vehicle – Hazards" for more advice.

**Warning: Kerbs.** You should always try to avoid driving up or down kerbs as this may cause the Scooter to topple. Use access ramps wherever possible. Never attempt to climb or descend kerbs greater than that noted in the Technical Specification. If you have to climb or descend a low kerb, always tackle it straight on. See "Driving Your Vehicle" – Hazards for more advice.

**Warning: Speed.** Turning at maximum speed might cause the Scooter to topple over. **Never turn at maximum speed** and always reduce speed for turns. Always slow down when amongst pedestrians and ensure you do not run into them.

**Warning: Stopping.** If the Scooter stops suddenly when turning, it might topple. Try not to brake when turning. Always take particular care when turning.

**Warning: Reversing.** Always take particular care when reversing the Scooter as injury to other people may occur if safe distances are not maintained.

**Warning: Leaning Over.** Do not lean sideways, as this could cause the Scooter to topple.

**Warning: Escalators.** Never drive the Scooter onto an escalator as this could cause the Scooter to topple and result in severe injury.

**Warning: Roads.** This Scooter is not designed or compliant for use on public roads, apart from crossing roads at designated places.

**Warning: Driving in Poor Visibility.** Scooters are not easily seen. Your Scooter is not intended for use in darkness or in poor visibility.

**Warning: Carrying Items.** Do not carry or attach anything to the handlebars or controls as this could affect the driving safety.

**Warning: Hot Surfaces.** If the Scooter is left out in the sun, surfaces could become extremely hot. Always try to park the vehicle in the shade. Never use the Scooter above ambient temperature of 35°C (95°F)

**Warning: Seats in Vehicles.** This Scooter is not suitable for use as a seat for an occupant when in a motor vehicle.

## Folding / Un-Folding Warnings

**Before folding or un-folding, refer to "Folding & Un-Folding the Scooter" section in this manual and read thoroughly.**

**THE AUTOMATIC FOLDING OR UN-FOLDING MOTION CAN BE STOPPED AT ANY TIME BY A SINGLE PRESS OF ANY BUTTON ON THE FOLD REMOTE CONTROL FOB OR FOLDING SWITCH PANEL.**

**Warning: Attempting to fold or un-fold the Scooter outside those methods that are described in the instructions above could result in injury and damage to the Scooter.**

**Warning: Only operate the folding or un-folding of the Scooter in visible sight, and within 2 metres (6.5 ft) distance.**

**Warning: Prior to folding or un-folding always check the scooter for damage or adjacent objects in the proximity that could cause harm or damage.**

**Warning: Keep the Scooter and Fold Remote Fob out of reach of children at ALL times.**

**Warning: Store the Fold Remote Fob when not in use in a safe and secure location as to prevent the inadvertent folding or un-folding of the Scooter. Avoid storing the Fold Remote Fob in a pocket, bag or location that could result in an inadvertent operation.**

**Warning: Whilst folding or un-folding the Scooter, be aware of potential trap hazards of moving parts and components, being loose clothing or other objects nearby. Never fold or unfold the scooter in the rain.**



# Controls



Before using your scooter, it is important to familiarise yourself with the controls. Do not attempt to drive, fold, un-fold or use the scooter before reading the rest of this Manual thoroughly.

## Dashboard Description

### 1. Battery Indicator / Status LED:

**Battery Indicator:** This indicator shows the level of charge in the batteries. When in the green area the batteries are fully charged. When in the yellow area the batteries need recharging and when in the red area the batteries urgently need recharging.

**Status Indicator:** The controller has a diagnostic mode: If the LED flashes, this indicates that the controller has detected an error or fault. If this happens refer to the diagnostic table at the back of this manual for a solution.



**Warning!** Automatic folding or un-folding of the scooter may not be possible if the battery pack requires re-charging. Monitor charge level during use. If the automatic folding/un-folding does not work due to a low battery level, then charge battery pack fully or use alternative recommended power supply available from your dealer.

**2. Horn:** Press the button and the horn will sound. Release and the horn will cease.

**3. Speed Control:** This controls the top speed of your Scooter. Press the right-button with hare symbol to increase maximum speed limit. Press the left-button with tortoise symbol to decrease the maximum speed limit. One lit segment of the display will indicate slower speed limit and three lit segments indicate faster speed limit. Set the speed before you move off. **Do not adjust the speed control dial when the vehicle is moving.**

**4. Drive Power Switch:** Press the central switch to turn the Scooter Drive Power on or off. The light indicator shows the Scooter Drive Power status – either **OFF** (no light), **STANDY-BY** (red light) or **ON** (green light). This is also the location to use the **Keyless Fob** by placing directly on the switch as shown in the image. After 30 seconds of inactivity, the Drive Power will revert from **STANDY-BY** status to **OFF** status being indicated by no light illuminated.

**Tip:** One of the most common “faults” is that the Scooter has been switched on with the free-wheel function enabled– Just switch-off at the power button, position the freewheel lever in drive and switch-on again.



**5. Security Keypad:** Press the four-digit security code sequence (#1, #2, #3, #4) on the dash, followed by pressing the (✓) button to switch on the Scooter for driving. This is an alternative to using the **Keyless Fob** (See 9.). Your dealer will provide you with the security code. The number sequence can be revised if required upon request by the dealer.



**6. Finger control:** To operate, switch Drive Power to 'ON' (See 4.). Pull the right-hand lever towards you and the machine moves forward. The more you pull the lever the faster the Scooter goes. To brake, release the lever. Again, the faster the lever is released the quicker you will stop. To reverse, pull the left lever towards you. Do not pull both levers at once. Note. The controls can be changed for customers with a left-hand bias. Please contact your local dealer for information.

**7. Lighting:** This switch controls the front and rear LED lights fitted to your scooter. When the lights are switched on, the switch will illuminate, and the front and rear position lights will be illuminated. Switch off the lights by actuating the switch. The switch backlight will extinguish. The rear light has a dual function being a brake indication light, illuminating when the automatic braking is engaged.

**8. Fold Remote Control Fob:** This two-button remote control is used to fold or un-fold the scooter. Press the 'OFF' button once to start the **Folding** sequence. Press the 'ON' button once to start the **Un-Folding** sequence. The fold or un-fold sequence will normally take 6-8 seconds. Pressing either 'ON' or 'OFF' again during folding/un-folding operation will override the motion and stop. Fobs are available from your dealer if damaged or become lost or require a Fob battery replacement.

**9. Keyless Fob:** The yellow fob is used to switch drive **ON** status. Place fob directly on the Power Drive Switch (Fig.8) when on power drive **STANDBY** mode (switch illuminated red). The switch will show green when Power Drive is activated and at **ON** status. The Keyless Fob is used as an alternative to the **Security Keypad** (See 5.). Replacement Fobs are available from your dealer if damaged or lost.

**Charging Points:** The charging point is situated on the side of the tiller head. There is also a charging point on the battery case that can be used whilst battery pack is removed from the Scooter (see Battery Charging section of this manual for details).

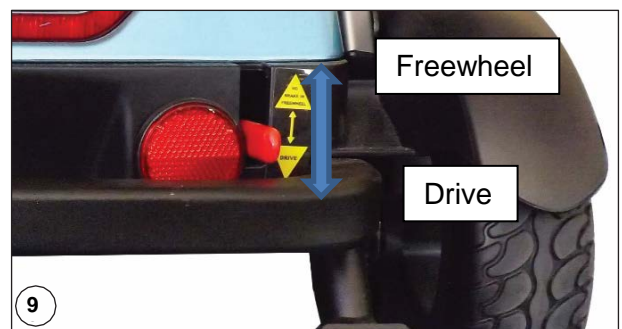


## Freewheel Device

**• IF YOU ARE NOT COMPLETELY SURE OF THIS FEATURE CONTACT YOUR DEALER BEFORE OPERATING THE SCOOTER.**

When the vehicle is switched off the brakes are Automatically engaged. This is called "Failsafe Braking". Also, if the batteries are flat, the brakes are automatically applied. There may be occasions where you may wish to move the vehicle without power. To do this there is a Freewheel Device fitted.

The Freewheel device (Fig.9) allows the vehicle to be pushed without power.



To activate, first locate the lever. When standing behind the Scooter, it is located on the right-hand side of the rear of the vehicle - See Illustration.

- Make sure the power is switched off.
- Move the lever **UP** The vehicle can now be pushed in Freewheel.
- Move the lever **DOWN** to engage drive. The vehicle is now braked. This is the normal operating position.

**NOTE:** To avoid excessive strain on the tiller / handlebar assembly, never push or pull the Scooter in freewheel mode if a user is on-board. Pull the lever **UPWARDS** to engage freewheel mode (no brakes - caution). Push the lever **DOWNWARDS** to engage Drive mode.

**Warning!** If the freewheel device is in "freewheel" mode, the braking is disabled. Never select the freewheel mode if the Scooter is on a slope or could be pushed onto a slope.



**Warning!** If the freewheel device is in "freewheel" the automatic braking is disabled. Never select the freewheel device if the Scooter is on a slope or could be pushed onto a slope.

## Brakes

There are 2 braking systems. The first works with the finger controls. When the finger control is released the Scooter will automatically brake and bring the Scooter to a stop. When the Scooter stops the automatic brake will engage. This will stop the vehicle rolling forward or backward. When you start the brake will automatically disengage. If the battery should run out, the brakes Automatically engage.

Note that even when freewheel is selected, a secondary braking system is applied Automatically to limit the maximum speed. You may notice this system causing drag when moving the Scooter in freewheel mode

## Armrest Adjustment

Armrests can be re-positioned or removed when the Scooter is in the folded position for compact storage (See **Folding & Un-folding the Scooter** section in this manual). Ensure that armrests are rotated and secured in vertical position before attempting seating (Fig.10).

The height and position of the armrest can be adjusted by pressing the buttons (Fig.11) for comfort.

If you require more room in the width of the seat armrests, then undo the knobs at the rear of the seat. (Fig.12). Slide the armrests in or out to suit. Tighten both knobs to clamp. Ensure that the armrest positions are no further inboard than the limit line as marked on the armrest tube (Fig.13).

To ensure that the user is sitting centrally, the armrests should always be adjusted to be equidistant from the centre of the seat.



**Warning!** Never drive with the armrests down or with the armrest knobs not fully tightened.

**Warning!** Always check the armrests are locked and secured before attempting to get on or to drive the Scooter.



## Seat Back

The angle of the seat back is fixed however it can be folded to allow easy storage and handling. To fold the seat, hold it by the top edge and push forward (Fig.14).



## Tiller Adjustment & Lock

The telescopic tiller can be height adjusted for a comfortable riding position and lowered for transport and storage.

Take care when adjusting the tiller not to pinch your fingers on the slide of the tiller. Once in the desired position, the tiller can be locked in place.

### Tiller Height Adjustment:

- **Rotate the tiller knob** anti-clockwise sufficiently to allow the tiller tube to move (Fig.15).
- **Raise/Lower the tiller** so that it is in its required position.
- **Rotate the tiller knob** clockwise and ensure that it is tight.

Do not extend the telescopic tiller beyond the limit-line marked as 'STOP' on the tiller tube (Fig. 16).



**Warning!** Before driving, always check that the tiller is secured. Safe steering will be impossible if you do not !

## Transferring In & Out of the Scooter

If you feel at all uncertain about getting in or out of the Scooter seek assistance.

### Transferring into the Scooter from the Front Before getting in:

- **Make sure that the Scooter is on a level surface**, and that it is not in Freewheel mode, and the freewheel lever is in 'Drive' position.
- **Make sure the brakes are engaged** - try to push the Scooter a little to verify that the brakes are working.
- **Ensure that the power button is switched to OFF.** The switch on the dashboard will not illuminated green (Fig. 17)
- **Ensure that the tiller adjustment is fully tightened**, and that any accessories are properly fitted and secured. (Fig. 16)
- **The seat back should be in the upright position** (Fig. 14).

### You are now ready to get in:

- Approach the seat from the side and step over the centre part of the Scooter with one foot. You should now be straddling the Scooter facing forwards and with the seat behind you. With your back to the seat, you can steady yourself using the armrests and then lower yourself gently into the seat.
- Lift each of your feet onto the footrest platform.

### Getting out of the Scooter:

- Before getting out of the Scooter, be sure that it is on a level surface, the Scooter is stationary, and the power key is switched to the off position. If you feel uncertain about getting out, seek assistance. Move the handlebars so that the front wheels are facing directly forwards.
- Lift your feet off the footrest platform and stand-up using the armrests to provide you with additional stability if required. (Do not put your full weight on the armrests).





## Operation

### Checklist

**Before sitting on and using the Smilie Auto Scooter you should make sure that;**

**Un-folding operation is completed**

- never sit or attempt to sit on the Scooter whilst in the fold or un-fold motion.

**Tiller is secured at a comfortable height.**

**Freewheel lever in 'Drive' position**

**Seat is in the forward and in locked position and the seat back is in the upright position.**

**Armrests are secured and at a suitable height.**

**Charging lead is removed.**

**Fold Remote Fob is stored in a safe location**

- to prevent the inadvertent folding or un-folding of the Scooter. Keep away from children and avoid storing the Fold Remote Fob in a pocket, bag or other that could result in an accidental press of remote buttons.

**Kerbs and Obstacles:** Try to avoid taking the Scooter over obstacles or kerbs. Tackle obstacles head on.

**Bad Weather:** We suggest that it is better to stay at home in bad weather. Remember that you can become wet and cold. Suitable clothes should always be worn. A high visibility jacket should be considered if you are in poor visibility. Remember not to use the Scooter in poor light or darkness.

## Driving the Vehicle

**Warning!** Read this before driving the vehicle! Whether or not this is your first mobility vehicle, please read these guidelines as all vehicles differ. Failure to do this may cause injury/ damage to you, a third party or the vehicle.



**1. Before you set out,** do check the weather forecast. We suggest that you make sure you are wearing suitable clothing, whether your journey is long or short.

**2. Range.** Your Scooter has a limited range. Always ensure that your planned journey does not exceed the maximum range in the Technical Specification Sheets and that your battery is fully charged.

**3. If you are taking medication** check with your doctor or physician that your ability to control the vehicle will not be impaired and do not drink alcohol and drive.

**4. Only use the vehicle for the purpose for the intended use.** Do not drive through standing water or on slippery/loose surfaces; do not transport more than one person; do not tow other vehicles or carry excess weight. Do not drive in heavy rain or snow.

**5. Check that the freewheel lever is not in the freewheel position / mode.**

**6. Check the battery charger cable is disconnected.**

**7. Check the seat back is upright.**

**8. Check the lower seat is locked in position.** The green label should align to the green indicator on the seat base (Fig.18).





9. Check that you are properly seated with your feet on the footrest platform.

10. Ensure your feet are securely on the footrest areas.

11. Check that the tiller lock is secured.

12. Make sure the way ahead is clear.

13. **Switch on the power with the key** (Fig.16) Check the battery level indicator is in the green area.

14. **Speed Control.** Set the speed control to a low setting.

15. **Gently actuate the finger controls** (either forward or reverse) and steer in the direction required. The vehicle will now move off. The further you push the paddle (either forward or reverse) the faster the vehicle will go.

16. **To brake, return the paddles to the starting/neutral position.** If you become unsure or feel unsafe release the paddles immediately.

**Note:** Never push or pull both paddles at the same time as you may damage your Scooter's control system and cause it to behave erratically.

17. **As you get accustomed to the power you can increase the speed.**

18. **Switch off when not in use.** To conserve your batteries and prevent the vehicle accidentally moving, always switch off the power when your Scooter is not in use. (Turn off at the Drive Power Switch or remove the lightweight Battery Pack). For longer duration of storage more than 7 days, see the **Storage** section in the manual.



**Tip:** If you do leave your Scooter switched on for a prolonged period without using, the Scooter will enter a 'sleep mode' to conserve power. To reactivate the Scooter, the switch on using the methods described in the **Controls** section of the manual.

## Driving the Vehicle - Hazards

**Warning!** Do not use this device if the vehicle is on a slope.



**1. Getting on and off the vehicle:** When getting on make sure that the vehicle is on level ground, and not in freewheel mode. Ensure that the arm-rests are secure. When getting off, park on level ground, turn off the ignition and remove the key before leaving your seat. Make sure you get off the vehicle in a safe area.

**2. Tiller Position:** Drive with the tiller in an upright position that feels comfortable with the controls within easy reach.

**3. Kerbs and Obstacles:** Try to avoid kerbs and obstacles. Never ride up or down kerbs or obstructions higher than that in the Technical Specification Sheets. Always tackle obstacles head on. Use ramps wherever possible and ensure that all wheels will fit on the ramp. Always try to avoid crossing a slope. If you have to cross a slope, take great care to avoid tipping. Never make sharp turns on slopes or back down a slope. Note that the anti-tip rollers at the rear of the Scooter may contact the kerb as you descend; this is normal.

**4. Hills & Slopes: Going Up Hill. Lean forward when going up.** Make sure you have enough speed to climb the slope. **Do not stop or turn the vehicle around.** If you have to turn while climbing an incline, keep going until you reach a level area. If you have to start on an incline, lean forward and apply power slowly – do not start and stop. If you are not comfortable about tackling a gradient, consider an alternative route. Note: Always check that the battery level is high; going up-hill takes a lot of energy. If the level drops too low the vehicle will cut out leaving you stranded.

**5. Hills & Slopes: Going Down Hill. Lean back in the seat when going downhill.** Turn the speed control to the lowest setting. If you are not comfortable about tackling a gradient, consider an alternative route.

**Try to avoid crossing slopes – always drive straight up or down the slope.**  
**NEVER BACK DOWN A SLOPE!**

**6. Terrain:** Do not drive your vehicle across deep, soft or wet/slippery terrain (for example, soft dirt, sand, or loose gravel). You could get stuck. Also avoid rutted, bumpy ground and keep to wet surfaces.

**7. Turning:** Always slow down before a turn; turning at speed can cause the Scooter to topple. Look in the direction you are travelling – If there is a blind corner, sound the horn. **Never turn at maximum speed.**

**8. Turning Circle:** Practice manoeuvring your Scooter so you can judge the turning circle. This is important to avoid tipping off kerbs or for negotiating tight spaces.

**9. Bad Weather:** If it is raining heavily, snowing or icy stay at home! Remember that ice, snow and slippery surfaces such as manhole covers, wet grass and drains could affect braking and steering. Use caution at all times. The Scooter has sensitive electronics could malfunction if they get wet or damp.

**10. Tyres:** Your vehicle is fitted with solid tyres. Should they become damaged they should be replaced by your dealer. Do not attempt to replace them yourself.

**11. Pavements:** It is illegal to drive at more than 4 m.p.h. on the pavement. Your Scooter is limited to that maximum speed but always slow-down in crowded areas and take care not to collide with pedestrians.

**12. Shower Rooms or Washing:** Never take your Scooter into a shower or steam room, and never hose it down. Its sensitive electronics could malfunction if they get wet or damp.

**13. Immersion:** Never enter large puddles or areas of water where the depth and/or current is unknown. Immersion or partial immersion of the Scooter may damage it and could leave you stranded.

## Transporting the Scooter



**Warning!** Always switch-off Scooter with the key and is recommended to remove battery pack prior to transportation (see Technical Specifications section for battery pack weight).

**Warning!** Contact your dealer for advice on how best to transport your Scooter in your particular vehicle.

**Warning!** Pinching or Crushing. Be careful to avoid being pinched or having your hands crushed when lifting or handling parts. Wear gloves whenever possible. Special attention should be paid when raising and lowering armrests, folding, un-folding and handling for transportation in a car or similar.

**Warning!** Your Scooter is not suitable for use as a seat for an occupant in a motor vehicle.

**Warning!** Do not stand the Scooter up on its ends or sides as it may become unstable and topple causing an injury.

**Warning!** Always ensure the Scooter is securely stowed within the vehicle using adequate and sufficiently strong tie down devices.

Your Scooter has been designed to be folded and stowed in the average size car boot. Contact your dealer for advice on how best to transport and use the appropriate lifting equipment if required for your Scooter. Do not attempt to undertake lifting without assistance.

To transport your Scooter you may need to fold it for suit. See **Folding & Un-Folding the Scooter** in this manual and follow these instructions.

# Folding & Un-Folding the Scooter

Before starting to fold or un-fold the Smilie Auto Scooter please read the folding and un-folding instructions thoroughly.

**Warning!** Deviating from the methods described within when folding or un-folding the Smilie Auto Scooter could result in damage to the Scooter or personal injury. If you are uncertain about folding your Smilie Auto Scooter, seek assistance.

Before proceeding with folding or unfolding the Scooter, check the following:

- That you are able and sufficiently capable to carry out the methods described below.
- That there is adequate clearance from adjacent objects to fold the Scooter of approximately 1.0 m (36").

*It is recommended that you use gloves and durable footwear if required to handle the Scooter.*

**THE AUTOMATIC FOLDING OR UN-FOLDING MOTION CAN BE STOPPED AT ANY TIME BY A SINGLE PRESS OF ANY BUTTON ON THE FOLD REMOTE CONTROL FOB (FIG.24) OR FOLDING SWITCH PANEL (FIG.23).**

**REMOVE THE BATTERY PACK WHEN THE SCOOTER IS NOT IN USE.**

**Battery Charge.** The Scooter Battery Pack is to be fully charged to enable folding or un-folding. If the operation does not work due to a low battery level, then check the *Charge Indicator* (See **Controls** Section of the manual) and then fully charge the Battery Pack prior to folding or un-folding. Use the methods described in **Battery Charging** section in this manual.

An Auxiliary Battery can be used to fold and un-fold if in a remote location and are unable to charge the Scooter Battery Pack using the supplied charger. Details on how to use the **Using the Auxiliary Battery** section in this manual.

## Un-Folding the Scooter

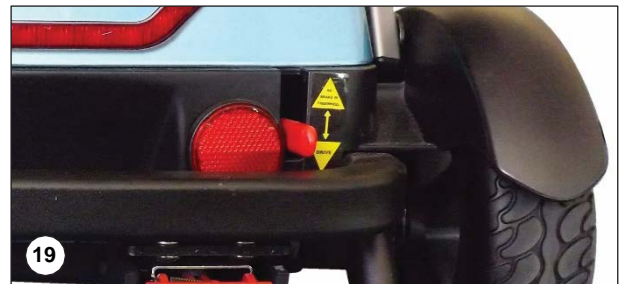
Switch to off at Drive Power Switch and remove charging lead (if connected) from power socket.

See sections on **Charging** and **Controls** in this manual.

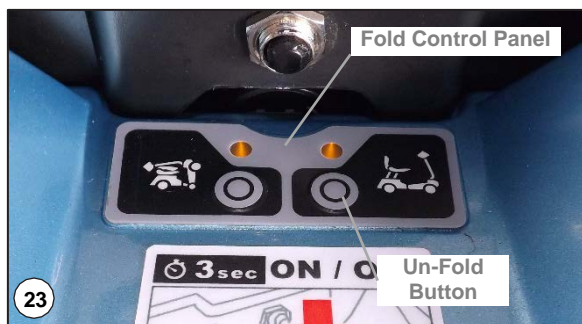
**Only proceed if the Scooter is on a flat, secure ground surface and the freewheel lever engaged to 'Drive' Position (Fig 19).**

**Scooter to be in the 'Horizontal Fold Position' (Fig.20) and NOT the 'Vertical Storage Position' (Fig.21).** To re-orientate the Smilie to the 'Horizontal Fold Position', follow the instructions as provided by your dealer. The dealer will demonstrate the safe method to be used to handle and re-orientate if required.

**Loosen tiller-height adjustment knob, and check the tiller is to minimum limit, then secure knob (Fig.22).**



Check that the Fold Control Panel is on **STAND-BY** status with the two lights are illuminated **orange**. Press and hold ANY of the buttons on the Fold Control Panel (Fig.23) or the Remote Fold Fob (Fig.24) for 3 seconds to activate to **STAND-BY** status from **OFF** status.



To un-fold the Scooter, press once either the 'UN-FOLD' button on the Fold Control Panel (Fig.23) OR the 'ON' button on the Remote Key Fob (Fig.24) whilst at **Stand-By** status. The scooter will then commence the un-folding motion over a duration of approximately 8 seconds.

**Observe and monitor the scooter as it un-folds.** Pay take attention that no objects can become entangled in the mechanism, and that the scooter operates in an expected fashion.

**Auto Power Off:** After 3 minutes of inactivity, the Scooter Fold System will revert from Stand-By status to Off status, as indicated on the Fold Control Panel by the lights being off.

**Check that the Smilie folding mechanism has engaged and the Scooter is in the drive position** (Photo. Pg 4). Note: If the mechanism does not engage then the scooter may only be partially un-folded. If so, repeat the steps above until locked in drive position. If the scooter cannot be completely un-folded after several attempts, do not use and contact your dealer.

**Raise the seat-back to upright, and then adjust and secure armrests to the upright positions** (Fig.25).

**Inspect the lower seat position indicator** (Fig.26) and check that the lower seat is secured in the forward position.



**Warning:** Attempting to use, fold or un-fold the Scooter outside those methods that are described in the instructions could result in injury and damage to the Scooter.

**Warning:** Only operate the folding or un-folding of the Scooter in visible sight, and within 2 metres (6.5 ft) distance.

**Warning:** Prior to folding or un-folding always check the scooter for damage or adjacent objects in the proximity that could cause harm or damage.

**Warning:** Always Keep the Scooter and Fold Remote Fob out of reach of children.

**Warning:** Store the Fold Remote Fob when not in use in a safe and secure location as to prevent the inadvertent folding or un-folding of the Scooter. Avoid storing the Fold Remote Fob in a pocket, bag or location that could result in an inadvertent operation.

**Warning:** Whilst folding or un-folding the Scooter, be aware of potential trap hazards of moving parts and components, being loose clothing or other objects nearby. Never fold or unfold the scooter in the rain.



## Folding the Scooter

Switch to off at Drive Power Switch and remove charging lead (if connected) from power socket.

See sections on **Charging** and **Controls** in this manual.

Only fold the Scooter if it is on a flat, secure ground surface, with the freewheel lever engaged to 'Drive' Position (Fig.27).

Loosen tiller-height adjustment knob and set the tiller height is to minimum, then secure knob (Fig.28).

### Seat back must be in lower position

Failure to have the seat back in the lower position whilst folding may result in damage (Fig.29).

### Armrests to be secured and at minimum position.

Both armrests to be secured using the knobs and at the minimum position, see **Armrest Adjustment** section in the manual (Fig.30).

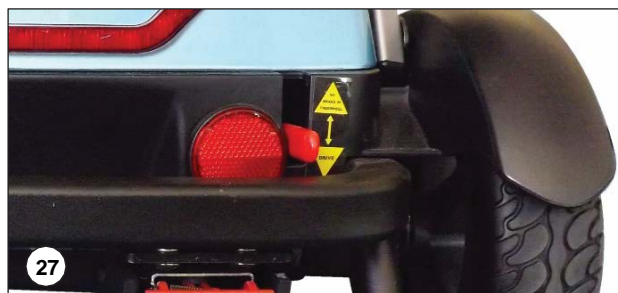
### Check that the Fold Control Panel is at STAND-BY status with the two lights are illuminated orange.

Press and hold ANY of the buttons on the Fold Control Panel (Fig.32) or the Remote Fold Fob (Fig.31) for 3 seconds to activate to STAND-BY status from OFF status. The two lights will illuminate orange when in STAND-BY status but after 3 minutes of inactivity, will revert to OFF status.

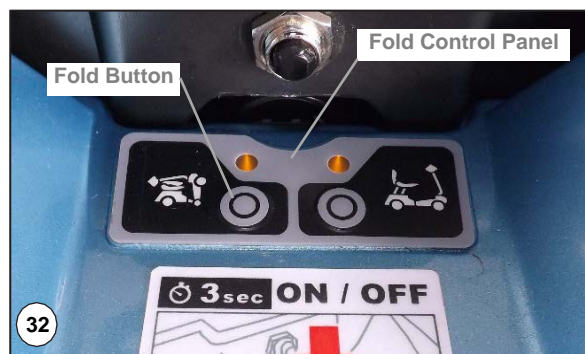
To fold the Scooter, press once either the 'FOLD' button on the Fold Control Panel (Fig.32) OR the 'OFF' button on the Remote Key Fob (Fig.31) whilst at STAND-BY status. The scooter will then commence the un-folding motion over a duration of approximately 8 seconds.

Observe and monitor the scooter as it folds. Pay close attention that no objects can become entangled in the mechanism, in particular the seat back is in 'down' position, and that the scooter operates in an expected fashion.

**Auto Power Off:** After 3 minutes of inactivity, the Scooter Fold System will revert from Stand-By status to Off status, as indicated on the Fold Control Panel by the lights being off.



Check that the Smilie Auto folding mechanism has engaged and the Scooter is in the **Horizontal Fold Position** (Fig.33). Note: If the mechanism does not engage then the scooter may only be partially folded. If so, repeat the steps above until locked in the Horizontal Fold Position. If the scooter cannot be completely folded after several attempts, then do not use and contact your dealer.



## Manoeuvring the Scooter

Before manoeuvring or positioning the Scooter to the **Horizontal Fold Position** and the **Vertical Storage Position**, consult your dealer as to the suitable methods to be applied.

Before proceeding with manoeuvring, check the following:

- That you are able and sufficiently capable to carry out the methods described
- That there is adequate clearance from adjacent objects to fold the Smilie Auto Scooter of approximately 1.0 m (36").

*It is recommended that you use gloves and durable footwear to whilst folding or handling the Scooter.*

The Smilie Auto Scooter, once folded, can be stored in a **Vertical Storage Position** (Fig.34) from the **Horizontal Fold Position** (Fig.33). This convenient feature of the Scooter enables the user to store in a more compact and manoeuvrable way.



**Warning!** Never attempt to carry or transport the scooter unless folding or unfolding operation is complete.

**Warning!** Never attempt to carry or transport the scooter in STAND-BY status.

**Warning!** Only manoeuvre the folded Smilie Auto Scooter on level flat ground and away from hazards.



**Warning!** Before manoeuvring the folded Smilie Auto Scooter, consult your dealer as to the most suitable method. If you are uncertain about folding your Smilie Auto Scooter, seek assistance.

**Warning!** Surfaces of the motor and actuator maybe hot after use. Avoid contact as may result in injury.



## Scooter Storage

Store the Scooter and battery back when not used in a dry area, ideally at room temperature - 17°C (63°F) to 21°C (70°F). Storing the Scooter and/or battery pack in temperatures below 10°C (50°F) and above 30 °C (86°F) risks damaging the Scooter and/or impacting Scooter and battery life.



**Warning!** If the Scooter is not to be used within 7 days then remove the battery pack from the Scooter. Store battery pack in a dry location at room temperature. Failure to do so may result in damage to the battery pack.

## Air Travel

Airlines and other transportation providers may request information on your Smilie Auto Scooter specifications and also the Lithium-ion battery pack.

Labels are added to the battery pack cases detailing the specifications, ratings and testing of the battery, and other information is within the **Technical Specifications** section of this manual.

Due to the passenger air transport regulations (IATA Guidelines), please take note of the following:

The Airline Compliant 11.6Ah (292wh) battery pack **IS COMPLIANT** with air transport regulations for passenger aircraft and hence is permitted for transportation in passenger aircraft based on the current IATA requirements (subject to Airline Regulation & Restrictions).



The Long Range 17.4Ah (438wh) battery pack **IS NOT COMPLIANT** with air transport regulations for passenger aircraft and hence is NOT PERMITTED for transportation in passenger aircraft.



The Airline Compliant battery pack can be removed from the Scooter prior to folding (*If required*), the Scooter then being stowed in the aircraft hold with the battery pack stowed securely within the aircraft cabin (subject to airline regulations and restrictions). See **Battery Pack** and **Battery Pack – Umbilical** for instructions and warnings regarding methods and use.

## Battery Charging

The Smilie Auto Scooter is supplied with two different types battery chargers that are approved and interchangeable with the **Airline Compliant** and **Long Range** battery packs.

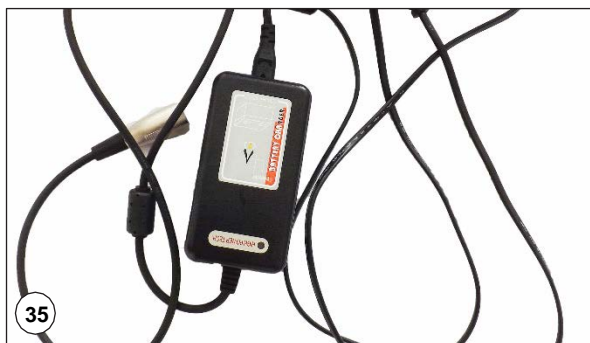
The battery chargers are identified as a '**2A Charger**' and a '**4A Charger**'. The instructions for use are identified below and are common for both charger types, unless where stated below.



### 2A CHARGER ONLY (Fig.35)

The battery charger has a single indicating lamp. When the charger is connected to the mains supply and switched on the lamp will show red. When the battery is charging and connected to the battery it shows orange.

When the battery is fully charged the lamp will change to green. Always ensure that the lamp shows green before switching off and then disconnect the charger at the mains.



### 4A CHARGER ONLY (Fig.36)

The battery charger has two small indicating lamps. When the charger is connected to the mains supply and switched on, the power lamp will show red whilst powered. The charge indicator shows red when the battery charging, and then when battery is fully charged the charge indicator lamp will change to green. Always ensure that the lamp shows green before switching off and then disconnect the charger at the mains.





The charging sockets are located on left hand side of the upper tiller cover (Fig.37) and also on the removable battery pack (Fig.38). Rotate the protective cover and push in the plug. When the vehicle is charged remove the plug and refit the protective cover to help protect against dust and moisture ingress.



The removable battery pack can be charged directly by removing from the Scooter and plugging the charger to the connector on the pack. Following the charging instructions as below.



#### Connection Instructions

When you receive the vehicle, the batteries are only partially charged – **always fully charge them before use**, preferably over-night.

1. **Place your charger in an area that is dry and well ventilated.** Make sure a power point is
2. **Check the vehicle is switched off and the key removed.**
3. **Check the mains switch is off.** Never connect or disconnect the charger with the mains on.
4. **Connect the charger to the charging point on the left-hand side of the upper tiller cover or on removed battery pack.**
5. **Connect the mains plug and switch on.**

**6a. (2A CHARGER ONLY)** The lamp illuminates red when the charger is powered up, (Fig.35) then orange when it is charging. The charger lamp changes to green when the battery is fully charged.

**6b. (4A CHARGER ONLY)** The power lamp illuminates red when the charger is powered up, (Fig.36) The charge indicator lamp illuminates orange when it is charging. The charger lamp changes to green when the battery is fully charged.

**7. Switch off the mains and remove the plug from the battery pack when fully charged.** Do not leave the charger plugged in with the power off. This will gradually discharge your battery.

The batteries are the lifeblood of your vehicle. Their characteristics can change depending on charging, temperature, usage and other factors. Listed below are guidelines to prolong battery life.

**Always cover the socket with the protective cap (Fig.37/38) when not being connected to the charger.**

## Battery Charging - Information

1. **After using your vehicle always charge it at the end of the day**, even after a short journey.
2. **If you do not use your vehicle for a prolonged period, place the battery pack on charge once a week, overnight.** For longer storage periods then fully charge the battery pack and **REMOVE** from Scooter. Then Charge the stand-alone battery pack every 8 weeks if in long-term storage (see Battery Pack)
3. **Always use the correct charger with the correct battery pack** as recommended by Electric Mobility Euro Ltd.
4. **If the batteries have been flat for a long time** (more than 10 weeks) it is recommended you **do not charge** and contact your dealer.
5. **Do not charge the vehicle in the open / out of doors** – it may rain and the battery charger is not waterproof.
6. **Keep the vehicle in a well-ventilated area and away from any naked flame.**
7. **Do not part charge the batteries.** Allow the charger to complete its cycle.

**Warning!** Never connect any other components apart from the compliant charger and approved accessories into the charging (4Way 'XLR' type) socket on the Scooter or battery pack. (Fig.37/38)

**Warning!** Never disconnect a battery or charger whilst the charger is connected to a mains supply.

**Warning!** Avoid storing your Scooter in cold/damp places. This will shorten battery life and may cause deterioration in the structure and electronic components.





## Battery Pack

The Smilie Auto Scooter is provided with a lightweight and **removable** Lithium-ion rechargeable battery pack. The pack has integral features to monitor the health and protect the battery through use and charging. Follow the points below when charging else could result in damage to the battery and cause potential harm.

**Only charge the battery pack with ambient temperatures between 10°C (50°F) and 30°C (86°F).**

**To maintain a maximum battery life and performance store the battery at room temperature, being 17°C (63°F) to 21°C (70°F).**

**Never store the battery pack with ambient temperatures outside the temperature range of 10°C (50°F) and 30°C (86°F).**

It may take 10 battery charge cycles to achieve the maximum level of battery performance from the first use of the battery pack.

**Note:** The battery pack has no user-serviceable items. Only the dealer will service or replace them when they are exhausted and dispose of them in line with environmental regulations applicable at the time. The dealer will assist you in to meet applicable disposal legislation. The user opening the battery case will result in annulling any service warranty agreement.

## Battery Pack - Umbilical

The Smilie Auto Scooter is provided with an Umbilical Power Cable that can connect the Removable Battery Pack to the Scooter via the Tiller Charge Point (Fig. 37/38 Pg. 20).

This enables the Scooter to be folded and unfolded for storage or air transport (see **Storage** and **Air Travel** sections of the manual). Then the battery pack can be stored/charged in a separate location to the Scooter as required.

**Take care in handling the battery pack whilst folding and un-folding, and in particular care on handling connected Umbilical Power Cable and removable battery pack.**

Follow the instructions as detailed in **Folding & Un-Folding the Scooter** sections and seek assistance if in doubt or need any guidance on how to use the Removable Battery Pack and Umbilical Power Cable.

**Warning!** If the battery pack appears damaged or has been dropped then **NEVER** attempt to charge. If the battery is not charging when connected to the charger then disconnect immediately and contact your dealer.



**Warning!** When charging batteries **NEVER** smoke or charge batteries in a place where there are naked flames such as gas-fired heaters. Never charge the battery pack outside as the charger is not designed to get wet. If the charger appears damaged in any way do not use it and contact your dealer for a replacement.

**Warning!** Always charge in a dry, well ventilated area at room temperature. Only charge the battery within the temperature range of 10°C (50°F) and 30°C (86°F).

**Warning!** It is strongly recommended that the mains socket used for charging the Scooter is protected by a 30 mA RCD (residual current device). Many buildings have sockets protected by a system based RCD. If you are in doubt as to the level of protection in your charging location then either purchase a plug in RCD or consult a qualified electrician to verify that your charging location mains sockets are protected.

**Warning!** If the battery pack is dropped, damaged or frozen it could heat up at anytime and in an extreme case, explode or catch fire.

**Warning!** Do not attempt to open the battery box/enclosures, there are no user-serviceable parts inside. It may be necessary for some carriers such as airlines to physically disconnect the batteries for transit. If this is the case the battery pack can simply be removed from the Scooter.

**Warning!** Never use a different battery charger to that the approved charger supplied with the Scooter. Damage or injury may occur if you do! If you require a replacement, then contact your dealer.

**Warning!** When charging batteries **NEVER** connect or disconnect the charger from the Scooter while it is still connected to the mains.  
- Remove the charger mains plug from the wall socket having first switched the mains socket off if a switch is provided.



**Warning!** If the Scooter is not to be used **within 7 days** with the battery pack fitted to the Scooter, then remove the battery pack from the Scooter, fully charge, and then store in a dry location at room temperature. Failure to do so will result in the damage to battery pack and/or degrade battery performance.

**Warning!** When the putting the battery into storage, store at room temperature and fully re-charge every 8 weeks. Failure to re-charge fully every 8 weeks may damage the battery irrecoverably.

**Warning!** Never submerge battery pack in water. Doing so risks damage that can lead to a fire/injury at any time.

**Warning!** Never dispose of the battery pack in a fire.

## Servicing & Maintenance

**1. This vehicle is designed for minimum maintenance.** However, it is recommended that your vehicle is serviced at least once a year, by a recommended Electric Mobility Dealer. If the vehicle is used constantly, we recommend a twice- yearly maintenance.

**2. Ensure the engineer stamps the Service Log (Page 29)** on completion of all servicing. Keep all receipts for servicing and repairs with this hand-book. This may add value when selling the vehicle.

**3. When the vehicle is due for its annual service make sure you report any concerns you have,** preferably when you book the service (See points to look out for below).

**4. On completion of the service, always test the vehicle** before the engineer leaves and make sure you are satisfied with the work carried out.

### Points to look out for:

- Are there any strange noises from the wheels or does the frame creak when going over rough ground?
- Any mechanical components creaking or deformed whilst folding or un-folding the Scooter?
- Is the Scooter locked in the drive position after un-folding with fold lock mechanism functioning correctly?
- Is the battery charged up correctly – is the “full” charge green light on after charging?
- Is the steering tight or is it loose when turning? Is there any play in the steering?
- Are the brakes effective?
- Is there any damage to spigots, linkages or parts related to folding or un-folding?
- Has anything come loose?
- Does the vehicle perform as well as it did when it was new?
- Are there noises or rattles that were not there before?
- Are there any signs of damage, corrosion or cracking?

## User Maintenance

It is important for safety that you carry out the following checks before use.

- 1. Visually check the machine for damage.**
- 2. Visually check the tyres for damage.**
- 3. Check the steering moves freely.**
- 4. Check that the tiller is secure and that the tiller adjust knob is tight.**
- 5. Check that the seat is located correctly.**
- 6. Check the armrests are secure.**
- 7. Check that the Scooter is locked in the drive position.**
- 8. The battery should be fully charged.**
- 9. Keep your vehicle clean by using a damp cloth and soapy water** – never use a hose or high-pressure washers or similar.

**Important – Possible faults:** As you get used to your vehicle you will get a feel for how it behaves. If something feels unusual, for instance the vehicle does not accelerate or brake smoothly; the brakes are not holding on a slope or the steering feels different, stop using the Scooter, contact your dealer immediately and explain to the engineer problems or concerns.

## Scooter Diagnostic Functions

Your Scooter Controller provides diagnostic information in the form of flash codes displayed on the green power LED on the battery gauge. The LED will flash a given number of flashes and then repeat the sequence after a pause. Upon switching on, the controller conducts a diagnostic test. This is quite normal. Provided that no fault is detected the LED will then be on constantly. If there is a fault then the LED will continue to flash the pattern corresponding to the numbers below - e.g. if a repeating pattern of 2 flashes appears, then a motor fault would be expected as per the list below.

Number of Flashes	Indicated fault and Corrective Action
1	Battery needs recharging or bad connection with batteries. Check connections, and recharge batteries.
2	Bad motor connection. Request assistance from dealer who will check all connections between controller and motor. Low battery
3	Excessive voltage detected at controller. This may occur if overcharged and/or travelling down a long slope. Check battery connections. If travelling down a slope, reduce your speed to minimise the amount of regenerative charging.
4	Excessive current load detected at controller. This may occur if Scooter has detected overheating. Switch off and leave for 5 minutes to cool. Check motor and wiring connections for faults.
5	Scooter in freewheel or has a poor brake connection. Engage drive, and switch Scooter off and on. If this fails to cure the problem, check parking brake and ensure it stops the vehicle. Inform dealer who will check brake and motor connections.
6	Charger connected or Drive Inhibit device fitted. If fault persists, contact dealer.
7	Throttle fault. Finger control levers must be in neutral (centred) position before key is turned on. Switch Scooter off, centre levers, and switch back on. If fault persists, contact dealer.
8	Motor fault. Inform dealer who will check motor connections and wiring.
9	Controller fault. Inform dealer who will check controller and wiring.

**Tip:** If in doubt switch off and switch on at the key – if this does not cure the fault contact your dealer. Your dealer is there to help you but they can only do this if you give them as much information as possible. Remember correct information will get the problem fixed quicker and save you money. Phone the dealer and explain exactly what the problem is, recounting as much detail as possible. Tell them about the flash sequence appearing on the LED indicator; this will help the engineer to identify the problem before he calls to fix it. Your dealer is there to help you.



# Troubleshooting Guide

This table is a guide to fault finding. The fault may be a simple fix. If you have any doubts phone your dealer.

Symptom	Solution
<ul style="list-style-type: none"><li>• <b>Scooter does not move</b> when power is switched</li></ul>	<ul style="list-style-type: none"><li>• Are the battery packs properly inserted into the deck of the Scooter? - Re-insert</li><li>• Batteries flat - check level - recharge if necessary.</li><li>• Is the charger connected?</li><li>• Is Freewheel engaged?</li><li>• Freewheel has been selected while power is on Ensure free-wheel is not selected; switch off and on. NB the power indicator may flash indicating that freewheel has been selected.</li><li>• Safety cut-out has operated due to overload? Press the reset button on the battery pack. If the cut-out operates again, contact your service agent for assistance.</li></ul>
<ul style="list-style-type: none"><li>• <b>Steering is loose or wobbly when driven.</b></li></ul>	<ul style="list-style-type: none"><li>• Check for tyre or wheel damage.</li><li>• Damaged steering - contact dealer.</li><li>• Loose seat - contact dealer.</li></ul>
<ul style="list-style-type: none"><li>• <b>Vehicle behaves erratically when driven</b> or judders or cuts out ?</li></ul>	<ul style="list-style-type: none"><li>• Possible electronic problems - contact</li></ul>
<ul style="list-style-type: none"><li>• <b>Short Range</b></li></ul>	<ul style="list-style-type: none"><li>• Check tyres for damage.</li><li>• Check batteries are fully charging.</li><li>• Check vehicle moves easily in Freewheel</li></ul>



**Tip:** To save the batteries, the Scooter controller has a sleep mode, which is activated if the Scooter is not used but left switched on for some time. To reset, switch the Scooter off and then on again.



---

## Additional Safety Information

### Battery Level

Ensure the Scooter is **fully charged** before you start out on a journey and monitor the charge level indicated.

### Handlebars

Do not carry or attach anything to the handlebars/tiller. Anything attached to the handlebars will affect the control of the vehicle and may adversely affect stability.

### Floor Area

Do not use the floor area to carry objects, - they might fall off, or obstruct your movement.

### Other Precautions

#### Modifications

Unauthorised modifications could result in injury or permanent damage. Such modifications will invalidate any guarantees.

#### Other Items

Only fit compliant products or accessories recommended by your dealer.

### Child Safety

This product is designed to be operated by adults. Children should not be allowed to tamper with the controls or play on the vehicle. **Do not carry children as passengers, or any animals.** The product is designed for single adult use only. Keep all packaging well away from children. They could be harmed.

---

## Disposal



Contact your dealer for advice before you consider disposing of your Scooter and/or Lithium-ion battery pack. They will be aware of the environmental regulations in force at the time and will assist you to meet the applicable local legislation and directives.

## Additional Information

Owner's Manual: Replacement copies are available from: Electric Mobility Euro Ltd. Canal Way, Ilminster, Somerset, TA19 9DL Telephone: 01460 258100.

If you are visually impaired, please contact the Company to discuss your requirements. However, you should not drive a vehicle in a public place if you cannot see well enough to ensure your own, and others safety. Each vehicle comes with a copy of the BHTA Highway Code. Please make sure you read it. Telephone BHTA on 02077 022 141 for a new copy.

### Important note on the BHTA Highway Code:

On page 3 of the Code under "Consider Investing in a Mobile Phone" Read the section of this manual under "Safety Information". If in doubt contact your dealer. For Information regarding other Electric Mobility products contact your dealer or log on to [www.electricmobility.co.uk](http://www.electricmobility.co.uk)

---

## Frequently Asked Questions (FAQ)

### I want to transport my vehicle in a car.

Your Scooter can be folded for transportation as described in this manual. Your dealer can advise you on the correct equipment to be used depending on your vehicle and your physical capabilities.

### Can I fit weatherproofing such as a canopy?

No, the Rascal Smilie models are too small to have a canopy as they can adversely affect stability and handling.

### How long will my battery last?

This is a difficult question as it depends on many factors. The life of a battery depends upon the number of charging cycles the battery goes through, the peak loads and on the conditions of use. Some general advice about battery care:

- Keep it charged, and do not let the battery run completely flat.
- Ensure the Scooter is fully charged at the end of the charging cycle.

- Batteries may not perform as well in very cold weather or hot weather.
- Care can prolong the life of the batteries but remember that, in time, all batteries will fail to perform to specification.

#### **What range can I expect?**

The generally expected range is recorded in the Technical Specification Sheet. Remember, range can be affected by many things such as:

- Temperature. Cold weather can reduce the output of the batteries.
- Type of terrain. Obviously climbing hills takes more energy than driving on the flat.
- Weight of the person.
- The condition and charge of the batteries.
- Faulty or old batteries or a faulty charger.

**Always use the approved charger supplied with the Scooter. Using alternative chargers may cause damage to the battery and/or cause harm.**

#### **How long should I keep my vehicle before I change it?**

It is important that the vehicle you have suits your needs and abilities. Your Scooter should serve you well for many years but change it if at any time you feel it no longer meets your needs. Consult your dealer on the condition of your vehicle and remember vehicles of any type become more expensive to maintain the older they get.

- Battery packs and electrical connections for condition and corrosion.
- Check all cables for damage, abrasion, corrosion and that screening is intact. Replace as necessary.
- Steering bearing (adjust as required).
- Check steering components.
- Tiller adjustment - functioning, wear and damage.
- All assembly spigots and hooks for wear or damage.
- Fold-Lock mechanism and lever functions correctly.
- Seat mounting for wear or damage.
- Seat slide functions correctly.
- Seat lock mechanism locates correctly, and the spring mechanisms engage correctly. Lubricate as necessary seat slides.
- Handlebar/tiller alignment.
- Check motor and gearbox for unusual noise or vibration; investigate and inspect as necessary.
- Electromagnetic brake operation – does the Scooter slow when the hand control is released? Does the brake engage when the Scooter is pushed when in freewheel?
- Freewheel operation.
- Frame for damage or cracks.
- General check for corrosion, repair or protect as necessary.
- All operational controls work correctly.
- Battery condition and charger operation.
- Tighten all nuts & bolts.
- Correct all defects found and determine if the vehicle is roadworthy.
- Final road test.
- Clean the vehicle.
- Customer road test.

---

## **Engineer's Checklist**

Obtain all comments from the customer on the condition and serviceability of the Scooter and then complete an Initial diagnostic road test. Record all defects to be corrected. Now check, test and complete the following:

- Wheel bearings wear and lubricate
- Wheel alignment and tracking
- Tiller-head buttons and key operation
- Wear or damage to tyres or wheels
- Bodywork fixtures for damage, or cracking
- Throttle play and adjustment

#### **Important Note for the Engineer**

Enquire if the customer is satisfied with the product. Please report all points good or bad directly to: Electric Mobility 01460 258100 If you have any comments please include them.

---

# Technical Information Regarding EMI

## Important Technical Information regarding Electromagnetic Interference (EMI)

The intensity of interference from electromagnetic energy is measured in volts per meter (v/m), which refers to the strength of the electrical source (voltage) as it relates to the distance away from the object being considered (in meters). Resistance of a Scooter/wheelchair to certain EMI intensity is commonly called its “immunity level”. 20 volts/meter is a generally achievable and useful immunity level against interference from radio wave sources (the higher the immunity level, the greater protection).

Your Scooter has been tested and found to meet the required immunity level from Electromagnetic Interference (20v/m): the recommended density of interference from electromagnetic energy.



**Warning!** Even with the immunity level of 20 volts/meter, certain precautions must be followed to ensure your Scooter/wheelchair will not be affected by outside electromagnetic sources.

- Do not operate devices such as CB radios or mobile phones while the vehicle is switched on.
- Avoid getting close to transmitter masts, such as television and radio masts.
- Note you may experience interference when close to ambulance or fire stations.

If your vehicle starts to operate by itself switch it off and report this to your dealer.

# Technical Specification - Rascal Auto

Wheelchair type	Class A, B or C	Class B
Department of Transport	Class 1 2 or 3	Class 2
Overall dimensions	length x width x height mm (in)	962 (37.9.) x 500 (19.7) x 960 (37.8)
Dimensions folded	length x width x height mm (in)	770 (30.3) x 500 (19.7) x 510 (20)
Maximum carrying Capacity	kg (lb) ((stone))	115 (253) ((18))
Mass (weight) incl. Long Range battery*	kg (lb)	31.2 (68.8)
Mass (weight) incl. Airline Compliant battery*	kg (lb)	30.5 (67.2)
Mass (weight) of Long Range Battery	kg (lb)	3.4 (7.5)
Mass (weight) of Airline Compliant Battery	kg (lb)	2.8 (6.2)
Long Range battery capacity	Ampere-hours (Watt-hours)	17.4 Ah (438.5 Wh)
Airline Compliant battery capacity	Ampere-hours (Watt-hours)	11.6 Ah (292.3 Wh)
Range** Standard Battery	Km (miles)	Up to 18 (11.2)
Range** Airline Compliant Battery	Km (miles)	Up to 12 (7.5)
Wheel	front & rear mm (in)	200 (8) x 50 (2)
Type of tyres	Solid foam filled - puncture proof	
Maximum speed	Km/h (m.p.h.)	6.4 (4)
Minimum braking distance from max. speed	m (ft)	0.8 (2.6)
Type of seat	Comfort seat w/ folding backrest and adjustable arm function.	
The turn-around width	m (ft)	1.35 (4.4)
Turning radius	m (ft)	1.2 (3.9)
The maximum safe	degrees of	6° - Do not exceed the Scooter may topple
The maximum climbing ability facing	degrees of	6°
Ground	mm (in)	45 (1.8)
Maximum obstacle climbing	mm (in)	50 (2)
Maximum safe descendable kerb	mm (in)	50 (2)
Force to operate Accelerator	Newtons	3
Force to operate Freewheel Lever	Newtons	45
Ambient operating temperature	°C (°F)	5 (41) to 35 (95)
Ambient Battery charge temperature range***	°C (°F)	10 (50) to 30 (86)

**Note:** This Scooter meets the relevant requirements of ISO 7176:14 2008

\*Does not include weight of removable armrests of 1.6 kg (3.5 lbs)

\*\*Range on full charge and flat ground.

\*\*\*Do not charge battery outside this temperature range. Doing so can permanently damage battery.

Due to a policy of continual improvement, Electric Mobility Euro Ltd. reserves the right to change specifications without prior notice.



---

# Service Log

**Notice for the Service Engineer.**

Please make sure this part is stamped and dated after each service.

**Dealer stamp - 1st Service**

**Dealer stamp - 2nd Service**

**Dealer stamp - 3rd Service**

**Dealer stamp - 4th Service**

**Dealer stamp - 5th Service**

**Dealer stamp - 6th Service**

**Dealer stamp - 7th Service**

**Dealer stamp - 8th Service**

---

# Notes

---

# Notes

# Rascal Auto Scooter

Manufactured by



**Electric Mobility Euro Limited**, Canal Way, Ilminster, Somerset TA19 9DL  
Telephone: 01460 258100 [www.electricmobility.co.uk](http://www.electricmobility.co.uk)

E.and O.E. Issue 1 08/2019